



# Your Power is Making a Difference

Open to see your impact — plus new ways to  
save money and improve the environment

# Clean, Carbon-Free Power

Your electricity comes exclusively from renewable and hydroelectric resources. The Silicon Valley Clean Energy (SVCE) GreenStart and GreenPrime energy products are contributing to a cleaner electricity grid in California.

Version: October 2020

2019 POWER CONTENT LABEL			
SILICON VALLEY CLEAN ENERGY			
www.svcleanenergy.org			
ENERGY RESOURCES	GreenPrime	GreenStart	2019 CA Power Mix
Eligible Renewable <sup>1</sup>	100.0%	46.4%	31.7%
Biomass & Biowaste	0.0%	1.0%	2.4%
Geothermal	0.0%	3.9%	4.8%
Eligible Hydroelectric	0.0%	8.3%	2.0%
Solar	25.0%	17.6%	12.3%
Wind	75.0%	15.6%	10.2%
Coal	0.0%	0.0%	3.0%
Large Hydroelectric	0.0%	53.5%	14.6%
Natural Gas	0.0%	0.0%	34.2%
Nuclear	0.0%	0.0%	9.0%
Other	0.0%	0.0%	0.2%
Unspecified sources of power <sup>2</sup>	0.0%	0.0%	7.3%
<b>TOTAL</b>	<b>100%</b>	<b>100%</b>	<b>100%</b>
Percentage of Retail Sales Covered by Retired Unbundled RECs <sup>3</sup>	0.0%		
<sup>1</sup> The eligible renewable percentage above does not reflect RPS compliance, which is determined using a different methodology.			
<sup>2</sup> Unspecified power is electricity that has been purchased through open market transactions and is not traceable to a specific generation source.			
<sup>3</sup> Renewable energy credits (RECs) are tracking instruments issued for renewable generation. Unbundled renewable energy credits (RECs) represent renewable generation that was not delivered to serve retail sales. Unbundled RECs are not reflected in the power mix or GHG emissions intensities above.			
For specific information about this electricity product, contact:	<b>Silicon Valley Clean Energy</b> 1-844-474-SVCE (7823)		
For general information about the Power Content Label, please visit:	<a href="http://www.energy.ca.gov/pcl/">http://www.energy.ca.gov/pcl/</a>		
For additional questions, please contact the California Energy Commission at:	Toll-free in California: 844-454-2906 Outside California: 916-653-0237		

Choosing clean energy has an important impact within your community. In addition to your on-bill savings and emissions reductions, you are supporting clean power and energy programs that reduce pollution community-wide.



**\$69 Million**

in on-bill savings since 2017



**24% Reduction**

in overall community emissions since 2015



**\$1 Billion**

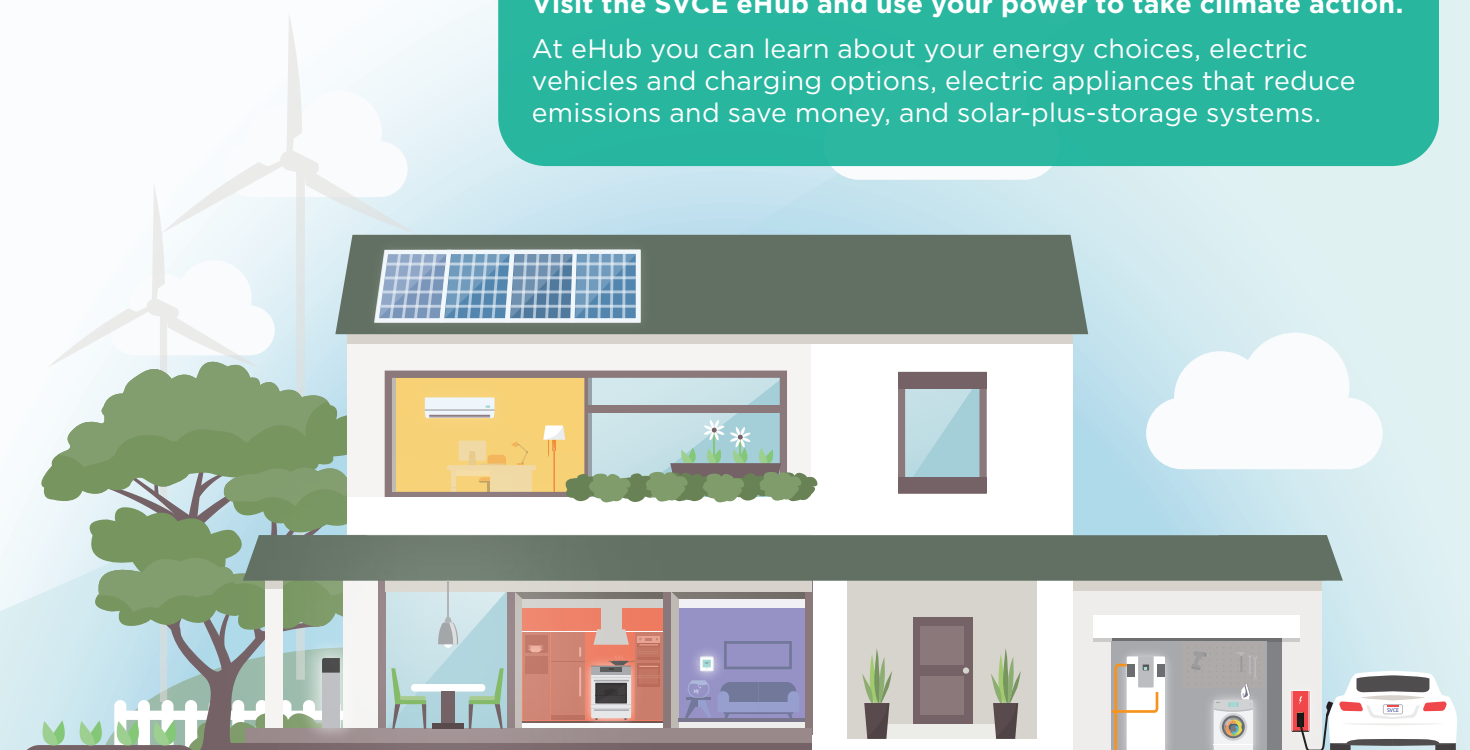
committed to build new renewable resources

This information is required by the California Energy Commission to be mailed to any customer that took service from SVCE in 2019 and active SVCE customers. Receiving this notice does not mean you are a current SVCE customer. The generation data represents 2019 and is provided in the "Annual Report to the California Energy Commission: Power Source Disclosure Program." Percentages may not total 100% due to rounding.

# Cleaner Energy, Lower Rates & New Opportunities

Visit the SVCE eHub and use your power to take climate action.

At eHub you can learn about your energy choices, electric vehicles and charging options, electric appliances that reduce emissions and save money, and solar-plus-storage systems.

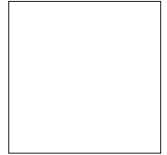


[SVCleanEnergy.org/ehub](http://SVCleanEnergy.org/ehub)





333 W. El Camino Real, Suite 330  
Sunnyvale, CA 94087



SVCE is a public agency, established and governed by thirteen communities in Santa Clara County.

**Learn More:**

**[SVCleanEnergy.org](https://www.svce.org)**

1-844-474-SVCE (7823)

Obtenga más información en **[SVCleanEnergy.org/es](https://www.svce.org/es)**.

請前往 **[SVCleanEnergy.org/zh](https://www.svce.org/zh)** 查看以瞭解詳情。

Quý vị có thể biết thêm tại **[SVCleanEnergy.org/vi](https://www.svce.org/vi)**.

Campbell | Cupertino | Gilroy | Los Altos | Los Altos Hills | Los Gatos | Milpitas | Monte Sereno | Morgan Hill  
Mountain View | Saratoga | Sunnyvale | Unincorporated Santa Clara County